

# DOOR PULLS, LATCHES & LOCKS

## FLUSH PULLS For Sliding Doors

P705



**P705 Sliding Door Flush Pull**  
128mm H x 32mm W x 9mm D with rounded ends.

\*Suitable for all internal sliding door applications  
\*Includes fixing screws

P706



**P706 Sliding Door Flush Pull**  
113mm H x 33mm W x 10mm D with square ends.

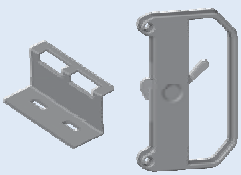
**Available in:**

Satin Chrome, Polished Chrome and Polished Brass

P705	Sliding Door Flush Pull - Retail Pack of 2
------	--

P706	Sliding Door Flush Pull - Retail Pack of 2
------	--

## DOOR LATCHES For Sliding Flyscreen Doors



**P715 Sliding Flyscreen Door Latch Set**  
Steel latch/pull with keeper and screws  
Powder coated Black.

\*Keyless latch suitable for most sliding flyscreen doors

\*Latched from the inside only

\*Simple lever operation

\*May be used in either left or right hand applications

\*Includes steel keeper and fixing screws

P715	Sliding Flyscreen Latch Set - Retail Pk 1
------	---

## SLIDING PATIO DOOR LATCHES & LOCKS

Cowdroy Sliding Patio Door Locks can be latched secure for safety. All locks are easy to install and operate simply via the turn of a lever. Locks can be used as either right hand or left hand and can be keyed alike. Keyed Locks can be keyed to suit the Doric range of window and door locks provided they are fitted with the same cylinder.



### P711 SLIDING PATIO DOOR LOCK

This lock is latch operated from the inside and key operated from the outside.  
It is also available as a latch only:

### P710 SLIDING PATIO DOOR LATCH

(Without key)

P710 & P711 are available in Black powder coat only.

P710	Patio Door Latch - Retail Pack of 1
P711	Patio Door Lock - with outside key. Retail Pack of 1
P711A	Replacement Single Cylinder with key - suits P711